



SHAKOPEE + SCOTT COUNTY  
**INNOVATION HUB**

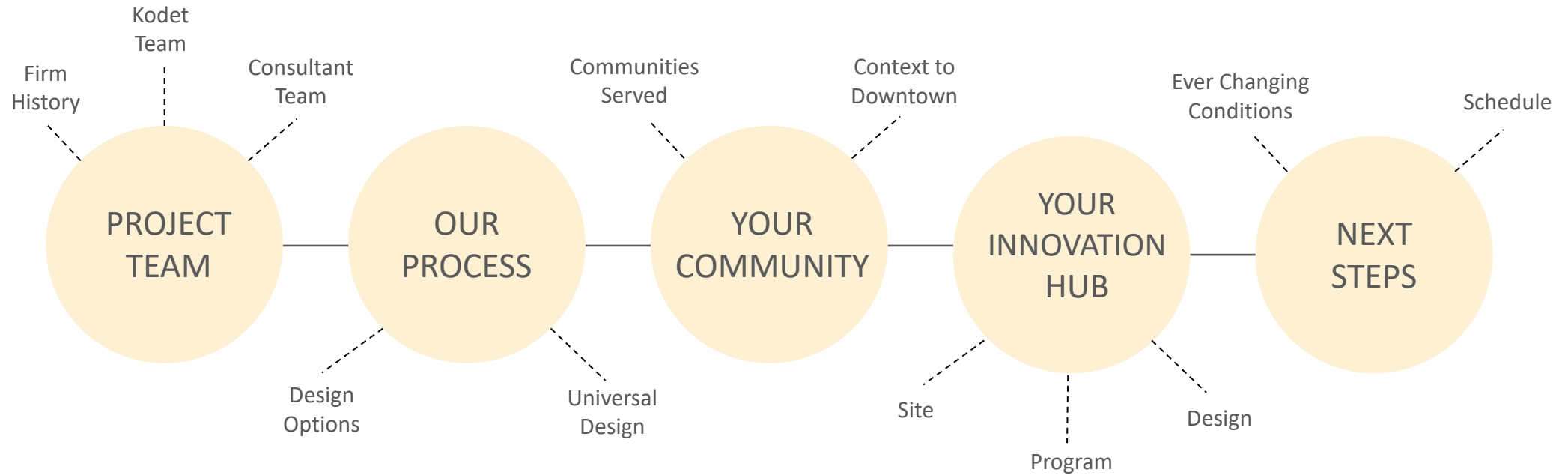


KODET ARCHITECTURAL GROUP

Architecture | Interiors | Planning

# SHAKOPEE + SCOTT COUNTY INNOVATION HUB

## AGENDA



KODET ARCHITECTURAL GROUP

Architecture | Interiors | Planning

## PROJECT TEAM



**Daniel Kodet, AIA, CID**  
Design Lead + Project Architect



**Kyle Palzer, AIA**  
Design Team + Interiors



**Mike Schellin, AIA, CID**  
Project Manager + Principal-in-Charge



**Teri Nagel, CSI, LEED AP BD+C**  
Accessibility + Quality Control



**KODET ARCHITECTURAL GROUP**

Architecture | Interiors | Planning



**Daniel Kodet, AIA, CID**  
Design Lead + Project Architect



**Kyle Palzer, AIA**  
Design Team + Interiors



**Mike Schellin, AIA, CID**  
Project Manager + Principal-in-Charge



**Teri Nagel, CSI, LEED AP BD+C**  
Accessibility + Quality Control

**RELEVANT EXPERIENCE:**

- Riverland Community College | Renovations
- NSC + WSC Public Health Clinic | Selective Remodels
- Dakota County | Pleasant Hill Library
- Hennepin County | A2 + A5 + A6 Renovations
- City of Roseville | License Center
- Ramsey County | IPR



Daniel Kodet, AIA, CID  
Design Lead + Project Architect



Kyle Palzer, AIA  
Design Team + Interiors



Mike Schellin, AIA, CID  
Project Manager + Principal-in-Charge



Teri Nagel, CSI, LEED AP BD+C  
Accessibility + Quality Control

**RELEVANT EXPERIENCE:**

- Zimmerman/Livonia Fire District | Fire Hall + Event Center
- Riverland Community College | Renovation
- Dakota County | Pleasant Hill Library
- Minnesota State Academy for the Deaf | Wilkins Hall
- U of M | Green Hall Renovation
- Hmong College Prep Academy
- City of Williston | Public Works Facility



## PROJECT TEAM



**Daniel Kodet, AIA, CID**  
Design Lead + Project Architect



**Kyle Palzer, AIA**  
Design Team + Interiors



**Mike Schellin, AIA, CID**  
Project Manager + Principal- in-Charge

### RELEVANT EXPERIENCE:

- Zimmerman/Livonia Fire District | Fire Hall + Event Center
- Dakota County | Pleasant Hill Library
- Minnesota State Academy for the Deaf | Wilkins Hall
- U of M | Green Hall Renovation
- City of Roseville | License Center
- Pine River-Backus Schools | Office Renovation
- Twin Cities Academy | New Building Design



**Teri Nagel, CSI, LEED AP BD+C**  
Accessibility + Quality Control

### RELEVANT EXPERIENCE:

- Riverland Community College | Renovation
- Dakota County | Pleasant Hill Library
- Minnesota State Academy for the Deaf | Wilkins Hall
- City of Crystal | Public Works Facility
- U of M | Green Hall Renovation
- Hmong College Prep Academy
- MnDOT Maple Grove | Maintenance Facility

## CONSULTANT TEAM



Scott Vander Heiden, PE,  
LEED AP BD+C  
Mechanical Engineer



Corey Meier  
Electrical Engineer



Adam Pawelk, PE  
Civil Engineer



Greg Duerr, PE  
Structural Engineer







## Pleasant Hill Library

Dakota County | Hastings, MN

### PROJECT RELEVANCE

- Variety of different co-working spaces
- Makerspace/Classroom
- Community meeting spaces
- Flexible interior spaces + furniture
- Community engagement
- Thoughtful programming



# MN State Academy for the Deaf

Wilkins Hall | Faribault, MN

## PROJECT RELEVANCE

- Innovative learning spaces
- Welcoming design elements
- Diverse target user group
- Multi-functional spaces
- Local artist installation







## Hmong College Prep Academy

Saint Paul, MN

### PROJECT RELEVANCE

- Diverse classroom design
- Multimedia center + athletic spaces
- Sustainability
- Welcoming interiors
- Thoughtful programming

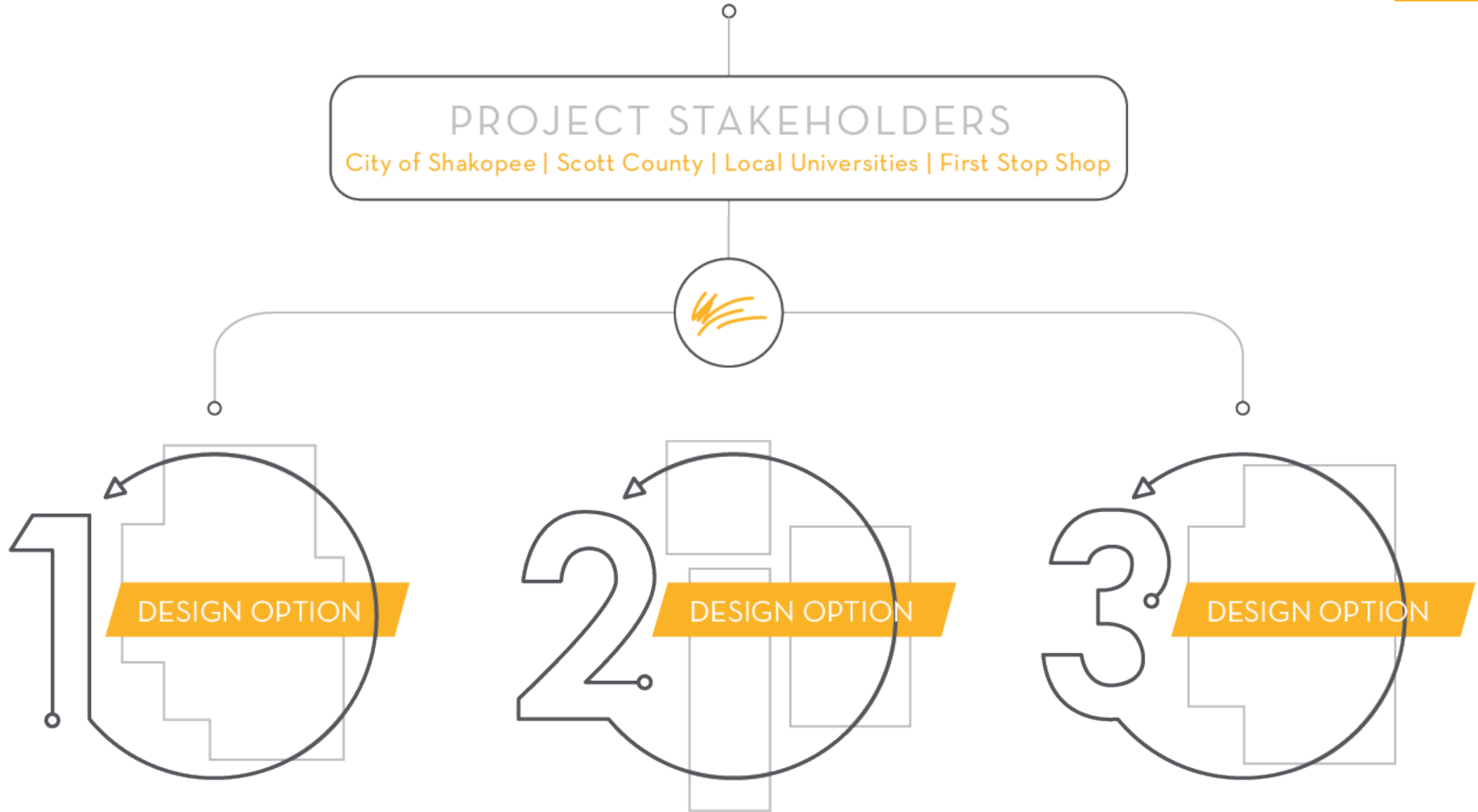


## Hennepin County

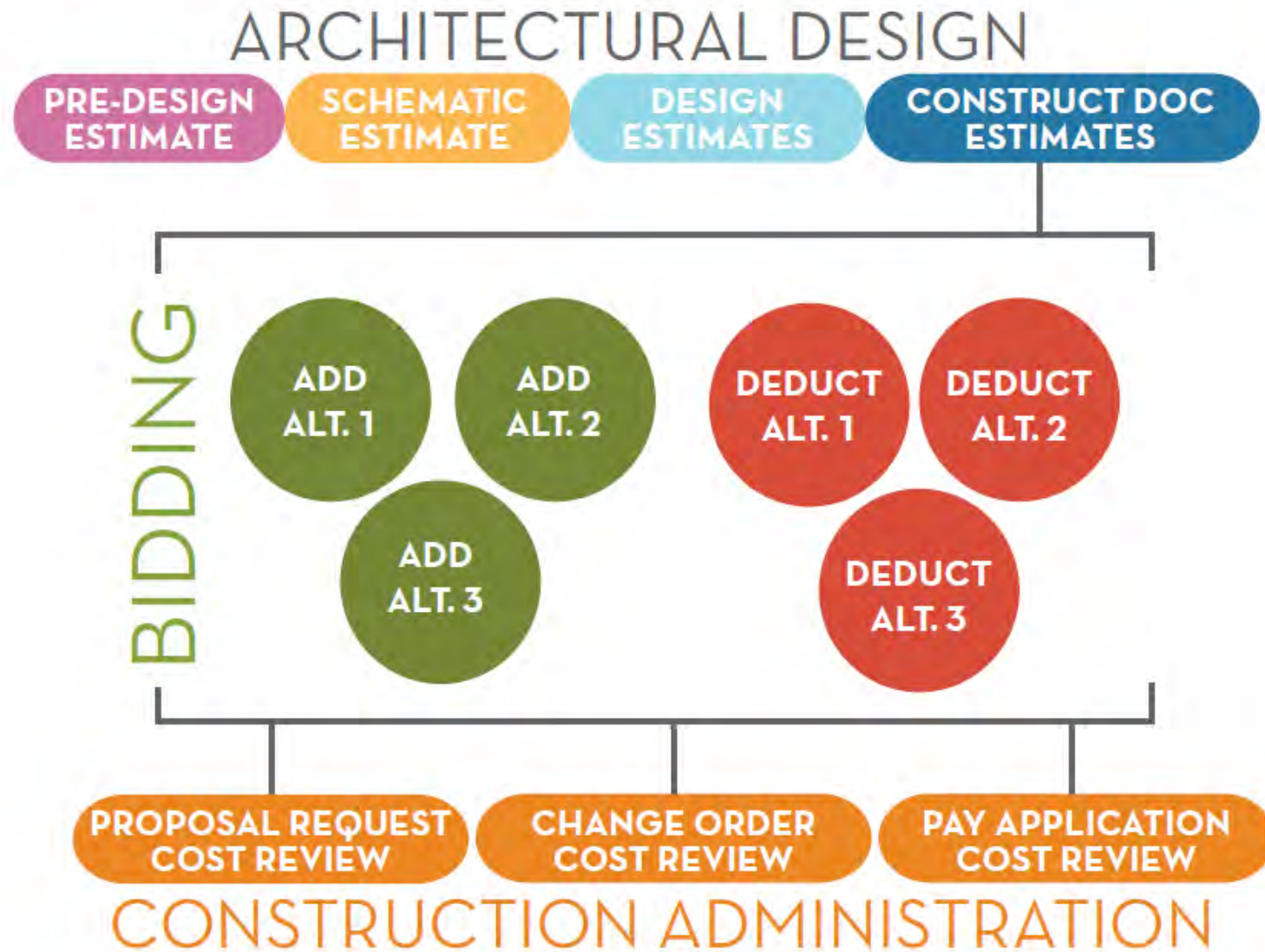
Office Remodels | Minneapolis, MN

### PROJECT RELEVANCE

- Variety of office working spaces
- Flexible interior spaces + furniture
- Community engagement
- Technology
- Welcoming interiors







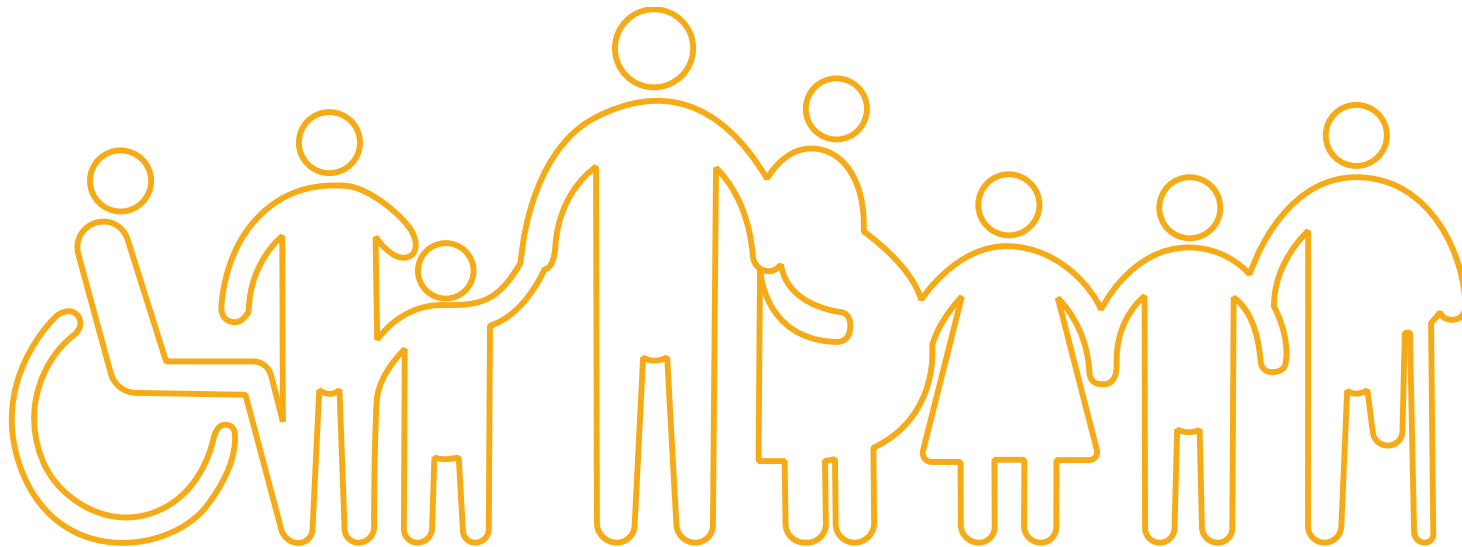
**UNIVERSAL DESIGN** | It's design that is usable by all people, to the greatest extent possible, without the need for adaptation or specialized design. By considering the diverse needs and abilities of all throughout the design process, universal design creates products, services and environments that meet people's needs

**ACCESSIBILITY** | Accessibility in architecture refers to the capacity that all people have access and inhabit a space regardless of their cognitive and physical capacities.

**WELL** | The WELL Building Standard is a performance-based system for measuring, certifying, and monitoring features of the built environment that impact human health and wellbeing, through air, water, nourishment, light, fitness, comfort, and mind.

## PRIMARY DESIGN CONSIDERATIONS

1. Way finding
2. Maneuvering
3. Adaptable Spaces
4. Low physical effort
5. Choice
6. Connection to nature, daylighting and views
7. Warm tones
8. Safety
9. Material Selections
10. Maintenance







SHAKOPEE





## SHAKOPEE CHARACTER

1. Main Street
2. Walkable
3. Brick
4. 2 – 3 Story Buildings
5. Mixed Use
6. Retail/Restaurants/Office
7. Street Parking & Lots
8. Open Storefronts
9. Awnings
10. Signage



# The Shakopee Innovation Center will be a nexus of education, workforce training, and innovation to support economic development and opportunity in Scott County.

**LEARNING HUB** | The center will provide diverse educational and workforce development opportunities including vocational and apprenticeship training, higher education, and industry-specific training courses.

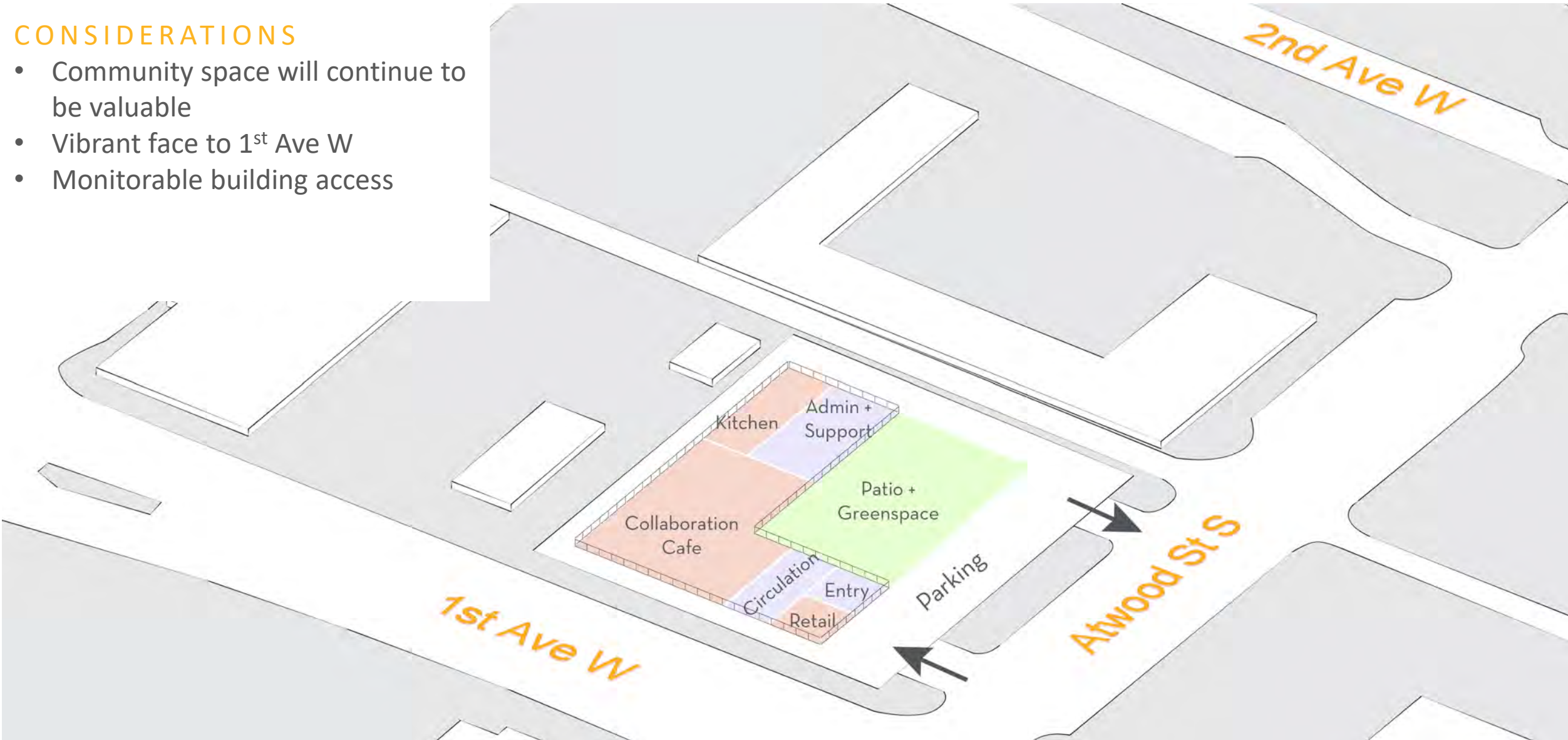
**ENTREPRENEURSHIP COMMUNITY** | The center will support entrepreneurship by providing collaborative coworking space and services for start-ups and aspiring entrepreneurs.

**BUSINESS ATTRACTION** | The innovation center will help Shakopee to attract and retain businesses by increasing the skill base of Shakopee's local workforce.



CONSIDERATIONS

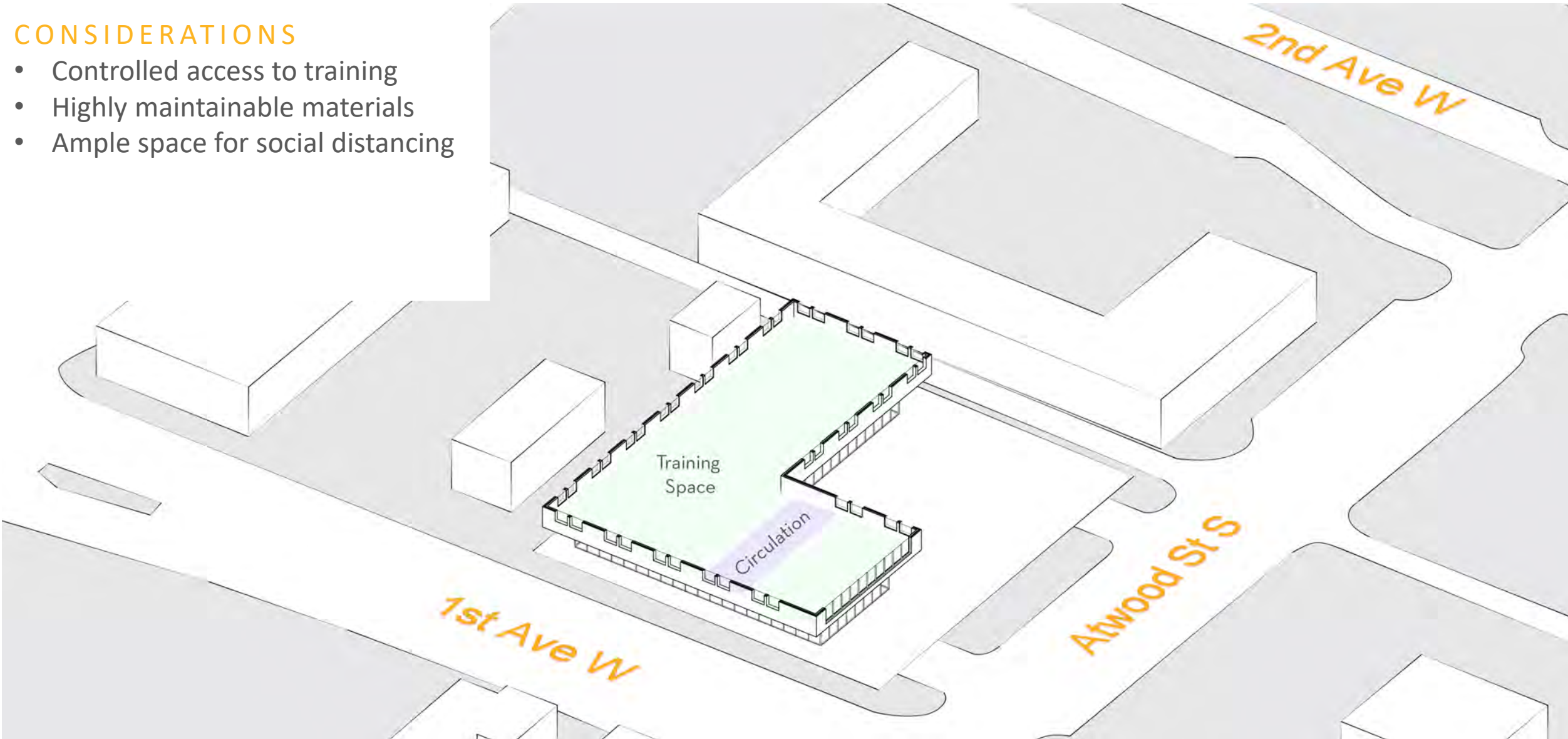
- Community space will continue to be valuable
- Vibrant face to 1<sup>st</sup> Ave W
- Monitorable building access



SCENARIO ONE | FIRST FLOOR

CONSIDERATIONS

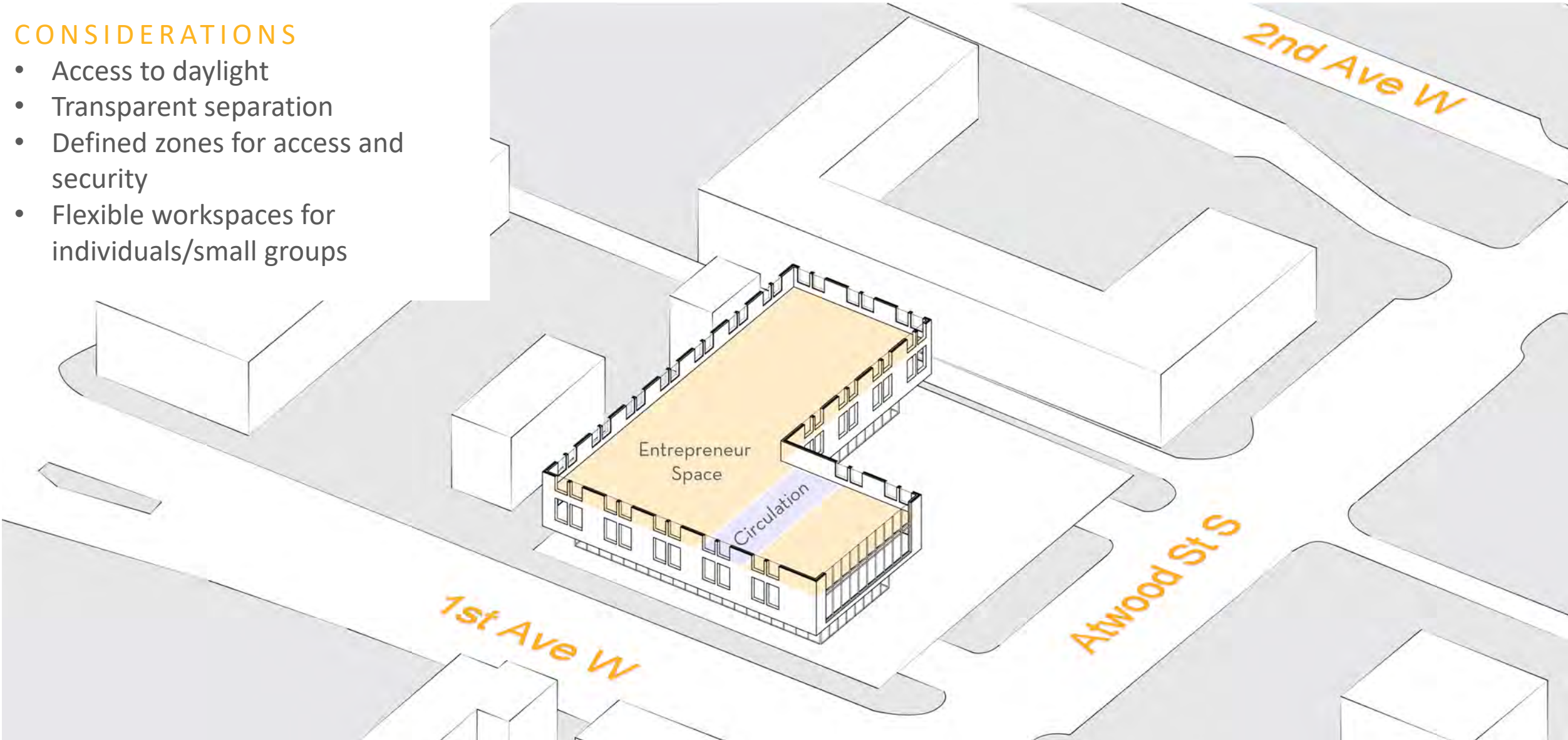
- Controlled access to training
- Highly maintainable materials
- Ample space for social distancing





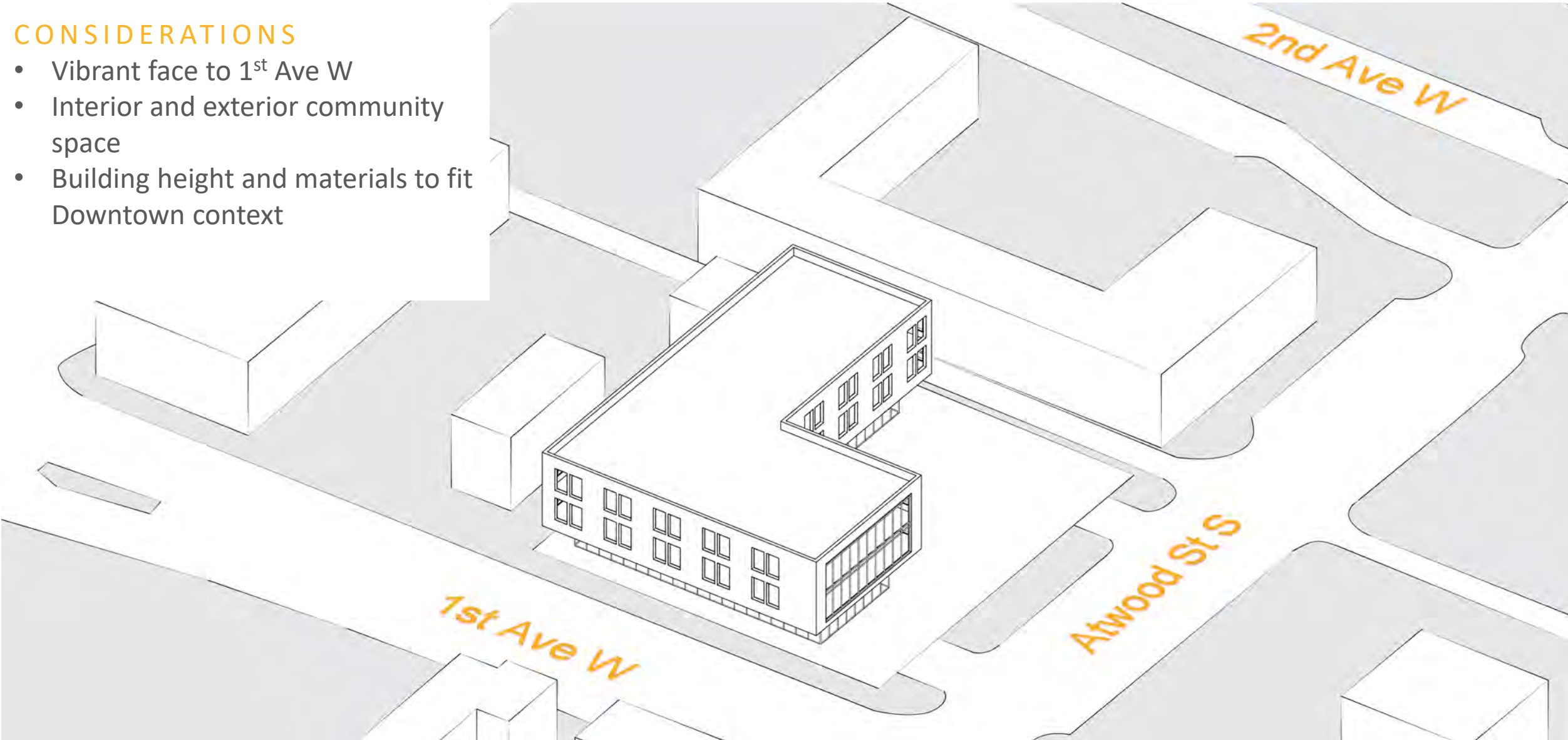
CONSIDERATIONS

- Access to daylight
- Transparent separation
- Defined zones for access and security
- Flexible workspaces for individuals/small groups



CONSIDERATIONS

- Vibrant face to 1<sup>st</sup> Ave W
- Interior and exterior community space
- Building height and materials to fit Downtown context



CONSIDERATIONS

- Direct access - 1<sup>st</sup> Ave W
- Green buffer at entry
- Admin offices up front for monitoring
- Entrepreneur showcase space on main level

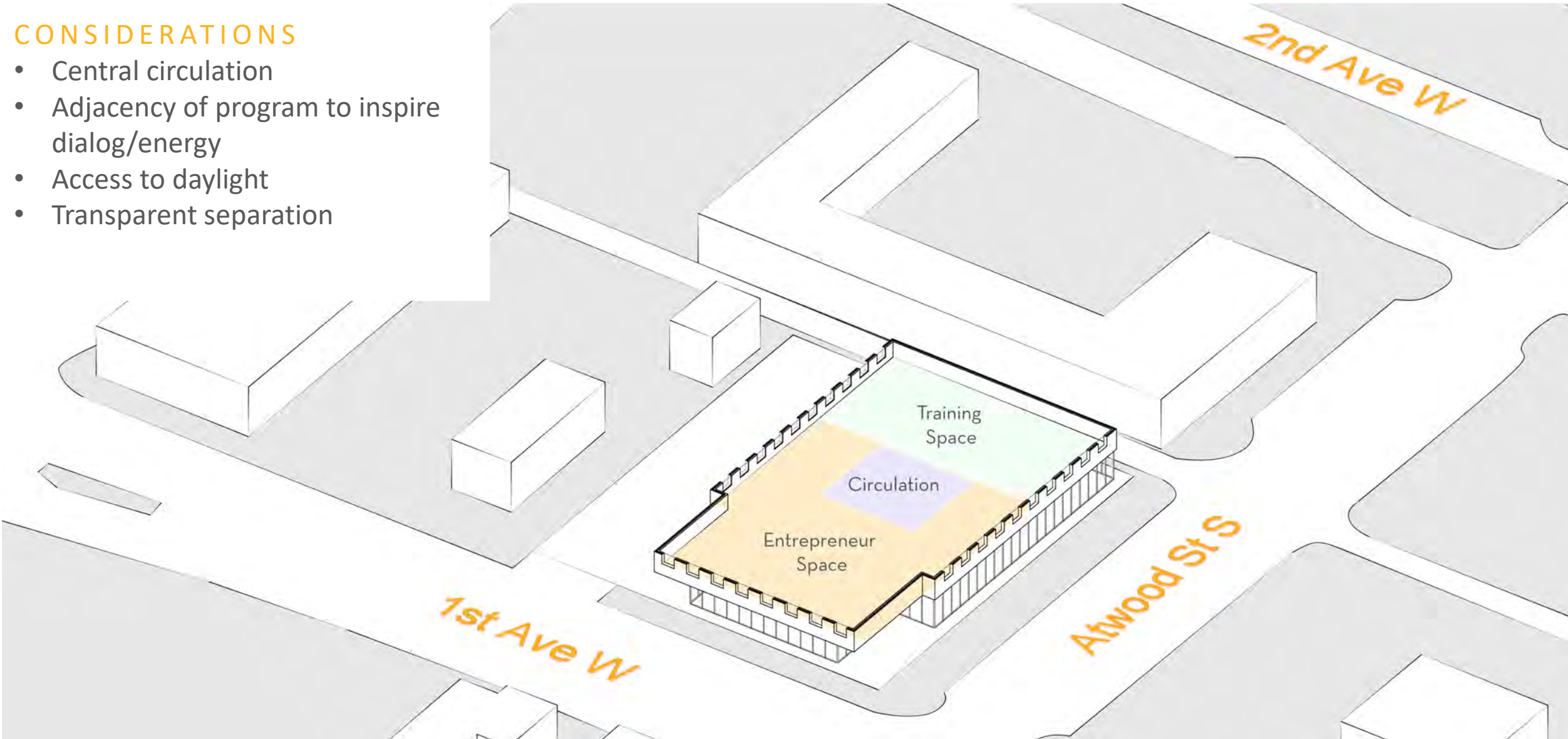


SCENARIO TWO | FIRST FLOOR



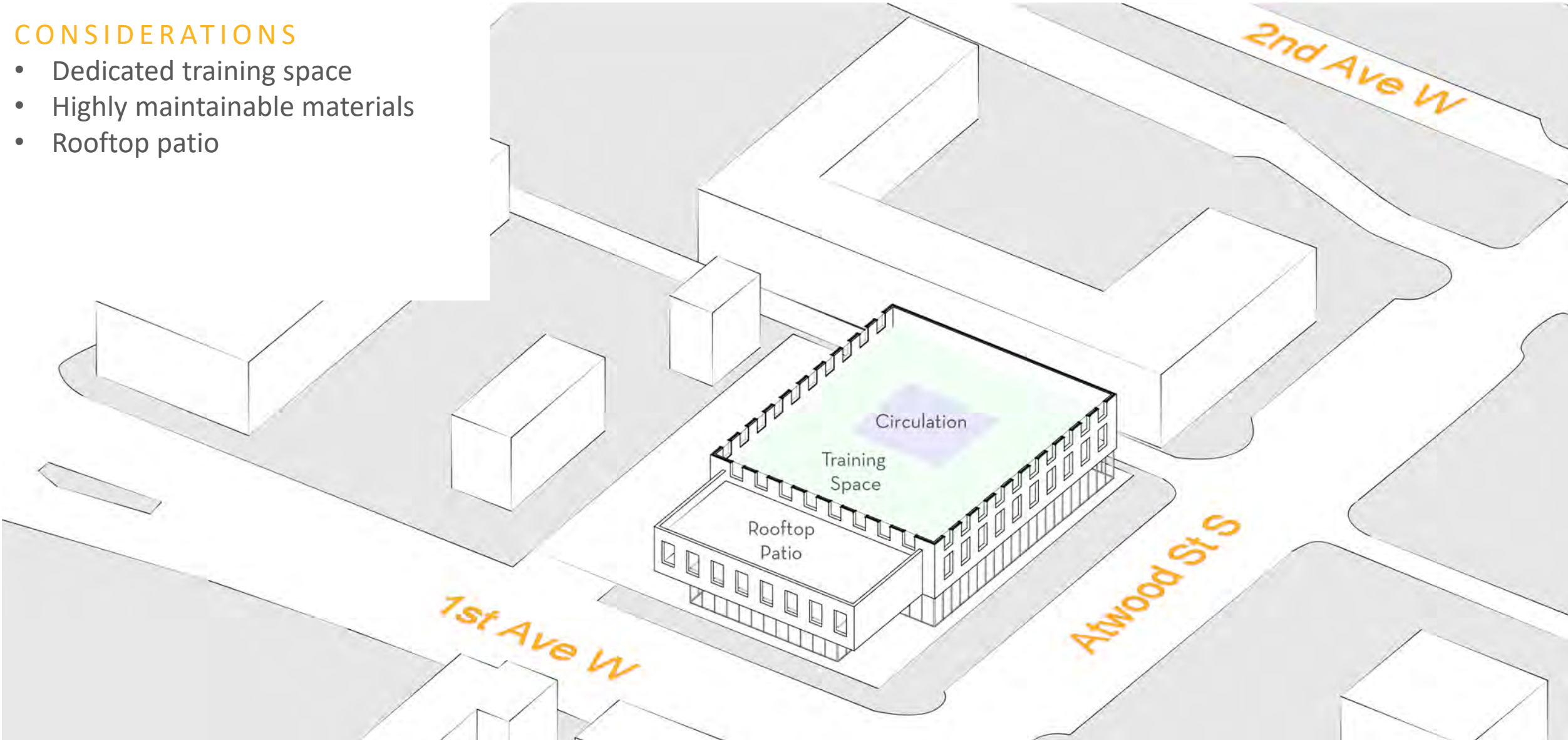
CONSIDERATIONS

- Central circulation
- Adjacency of program to inspire dialog/energy
- Access to daylight
- Transparent separation



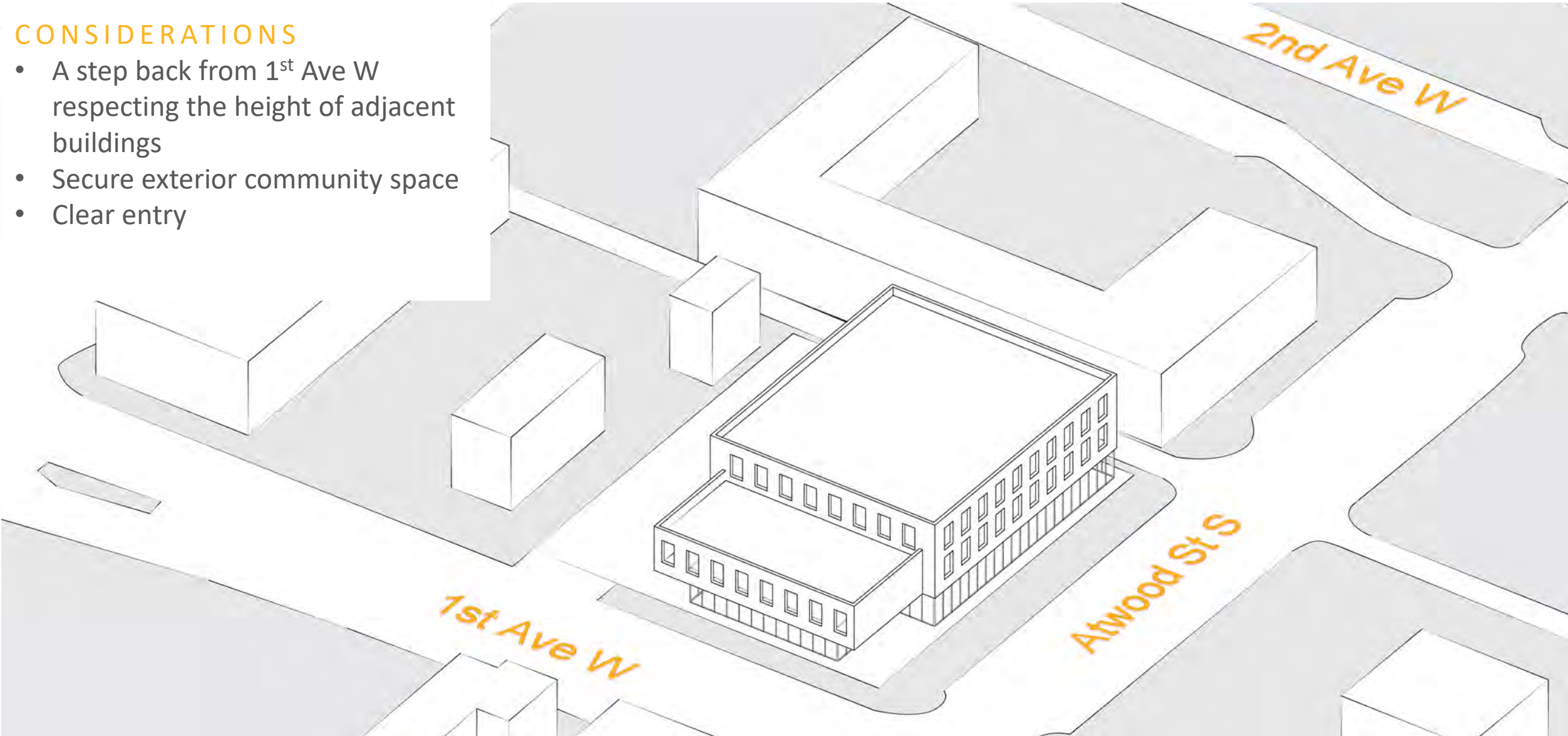
CONSIDERATIONS

- Dedicated training space
- Highly maintainable materials
- Rooftop patio



CONSIDERATIONS

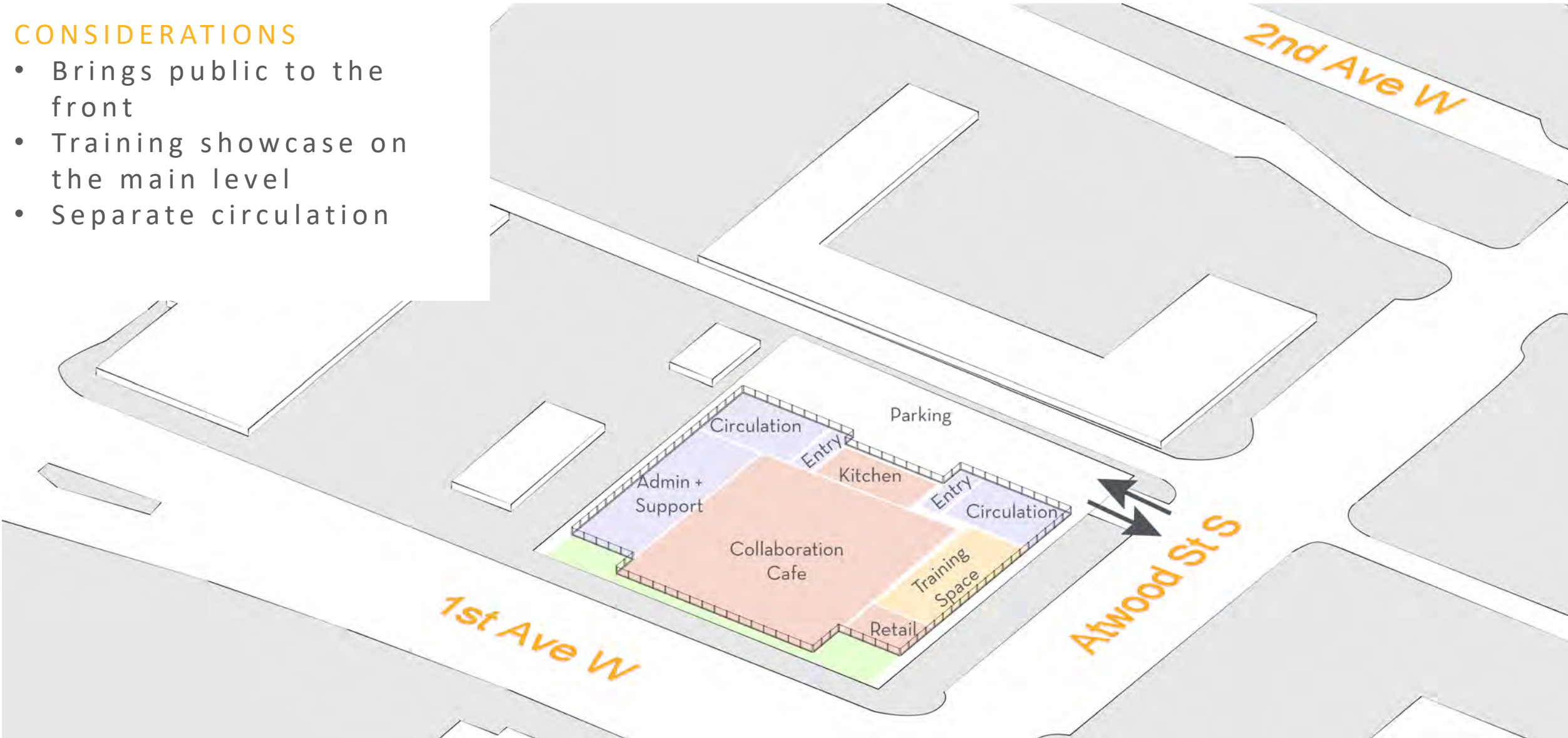
- A step back from 1<sup>st</sup> Ave W respecting the height of adjacent buildings
- Secure exterior community space
- Clear entry





CONSIDERATIONS

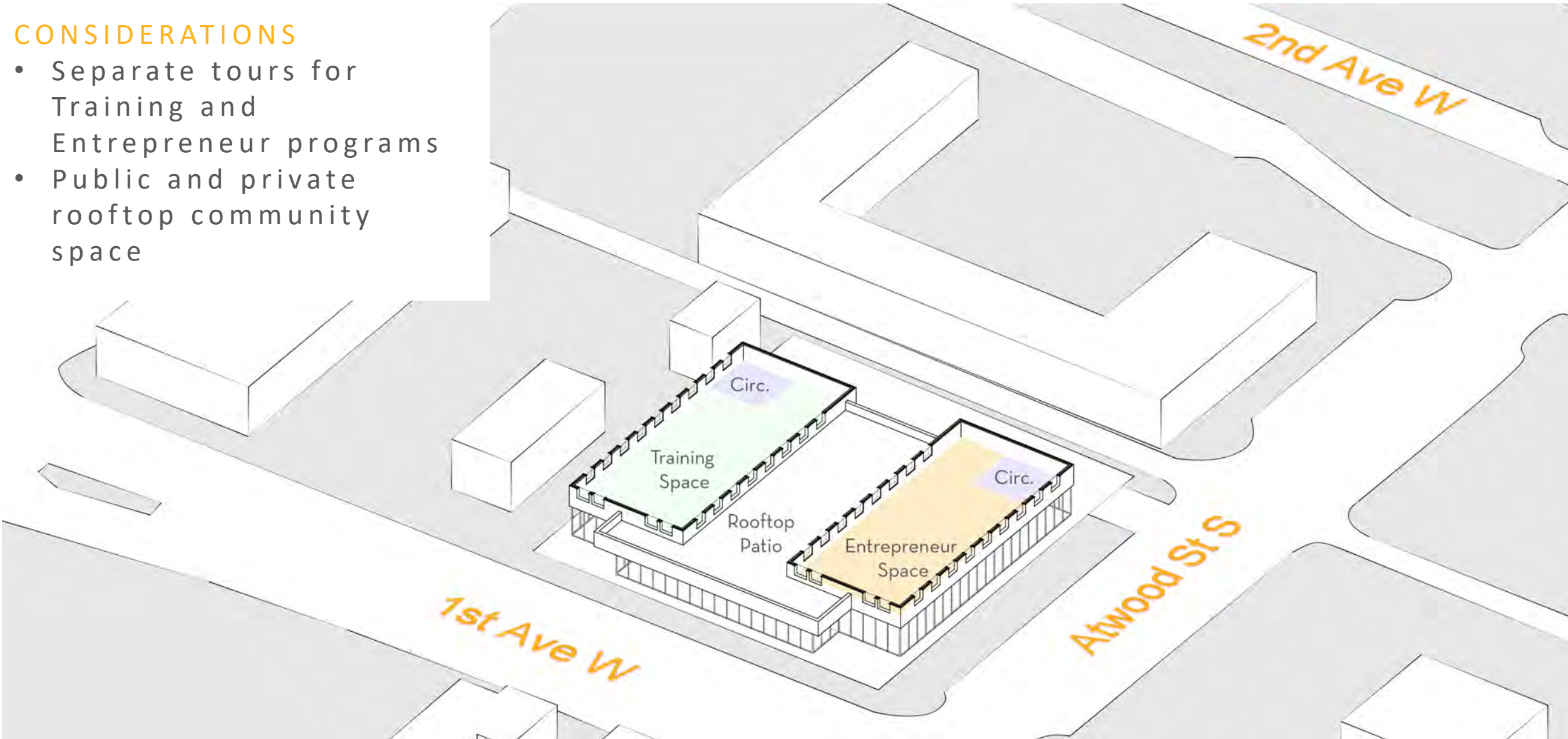
- Brings public to the front
- Training showcase on the main level
- Separate circulation



SCENARIO THREE | FIRST FLOOR

CONSIDERATIONS

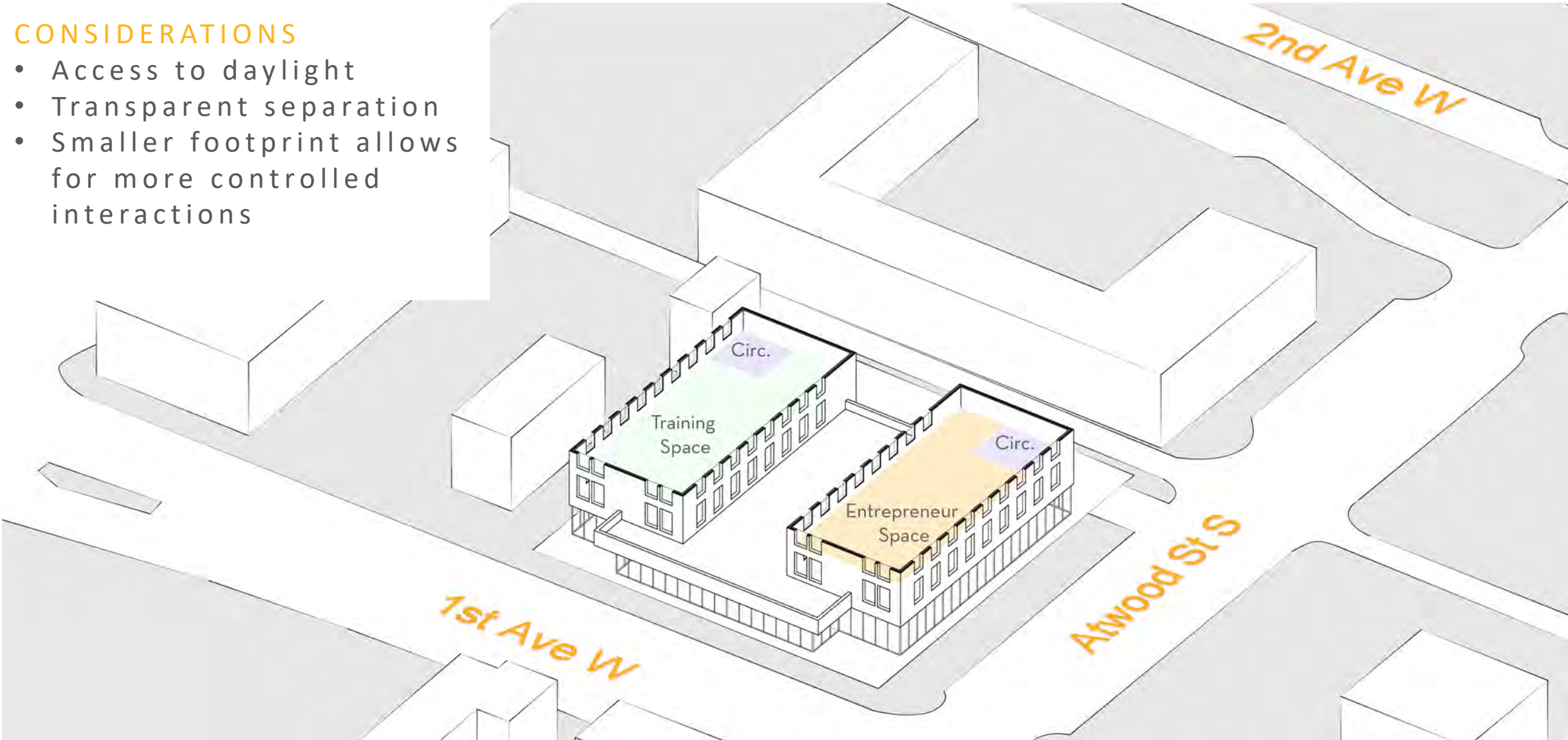
- Separate tours for Training and Entrepreneur programs
- Public and private rooftop community space





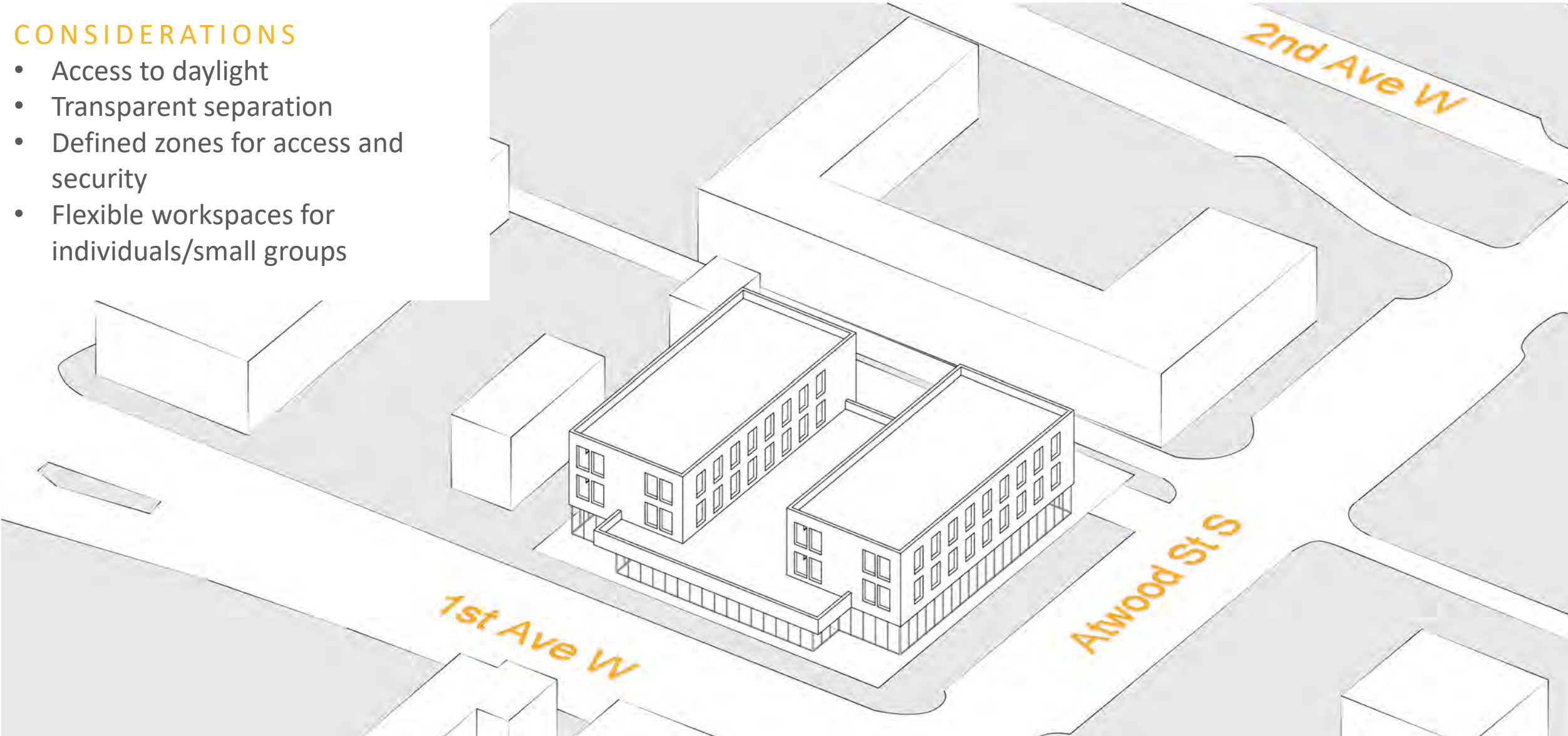
CONSIDERATIONS

- Access to daylight
- Transparent separation
- Smaller footprint allows for more controlled interactions



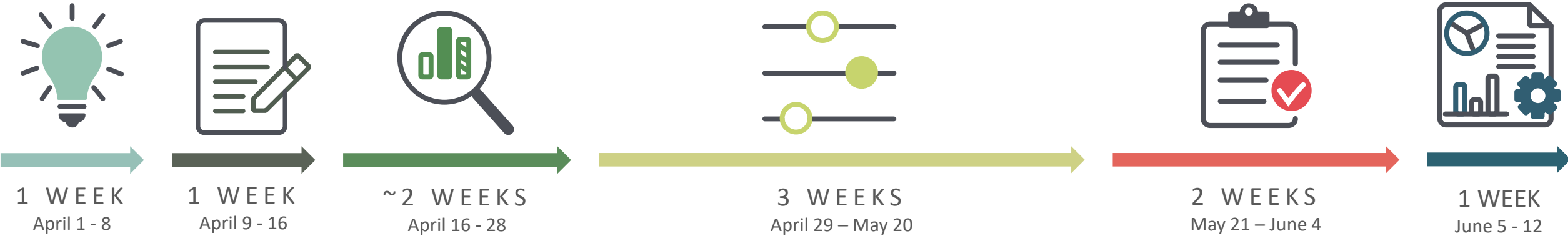
CONSIDERATIONS

- Access to daylight
- Transparent separation
- Defined zones for access and security
- Flexible workspaces for individuals/small groups





## NEXT STEPS



### DISCOVER

The project begins with the Kodet Team listening to your needs, visions, and priorities.

### RESEARCH

Next, our team meets with focus groups and documents existing site conditions.

### ANALYZE

We then analyze, review, and organize your comments with info about the building to establish project goals.

### OUTLINE

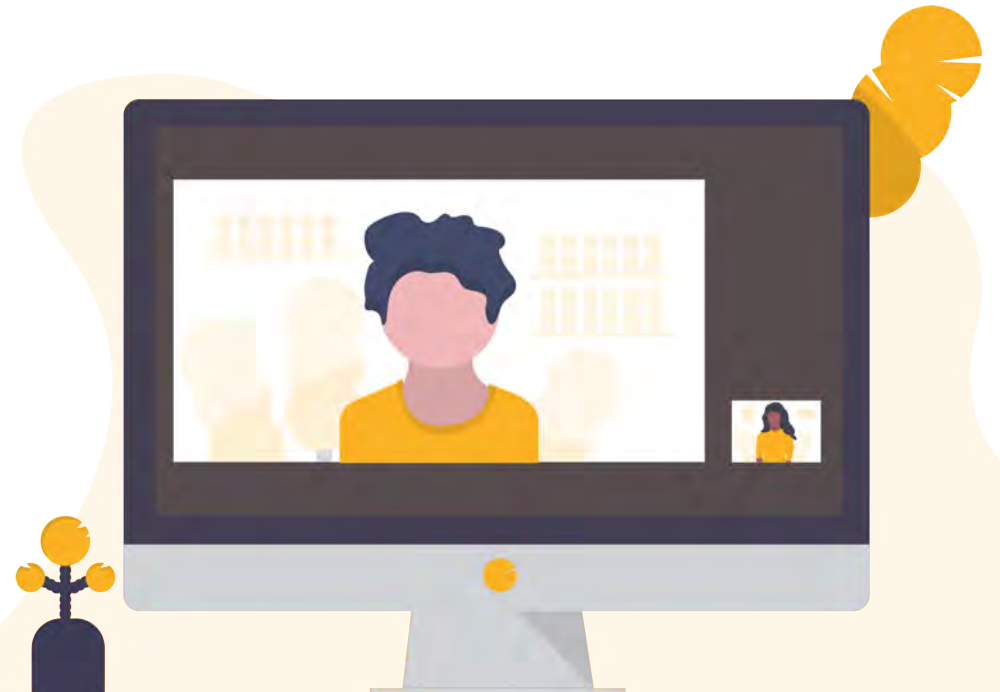
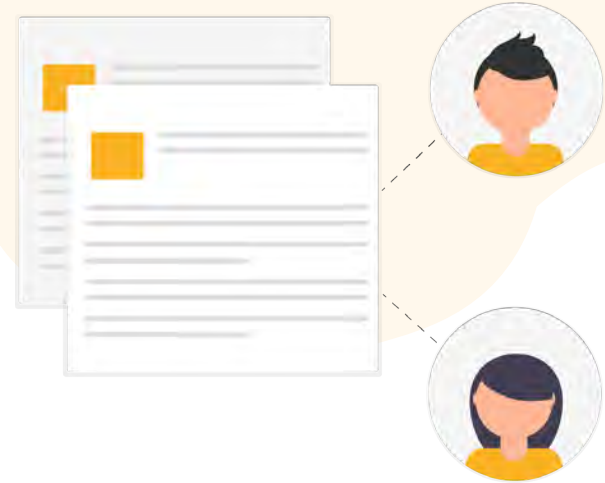
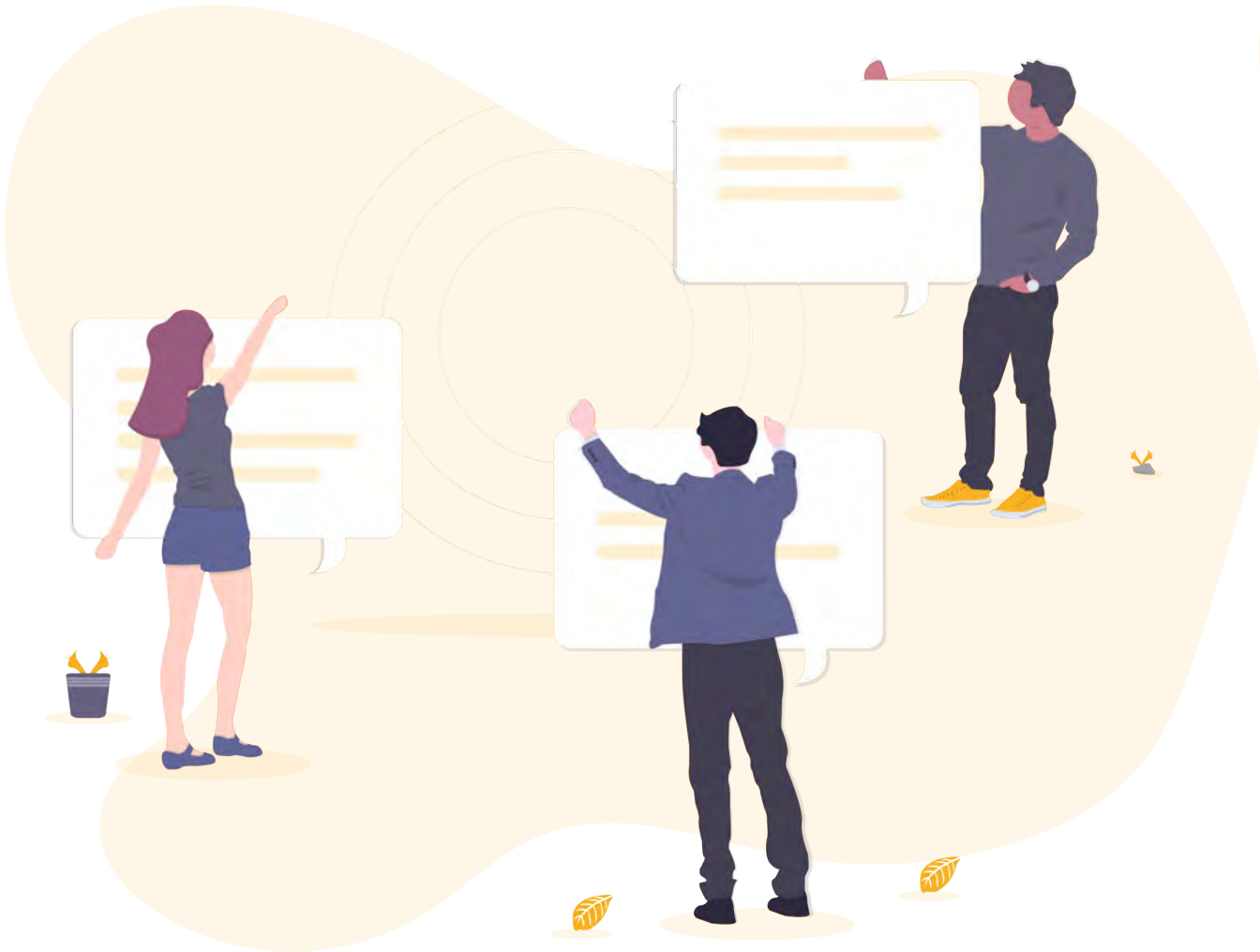
Our team outlines and develops three design alternatives for the site, facility, and interior layouts.

### REVIEW

After the options are reviewed, Kodet will refine the alternates based on focus group discussions and stakeholder feedback.

### SUMMARIZE

Kodet will compile the final draft report to review. Your comments will be integrated into the final document and presented for final approval.

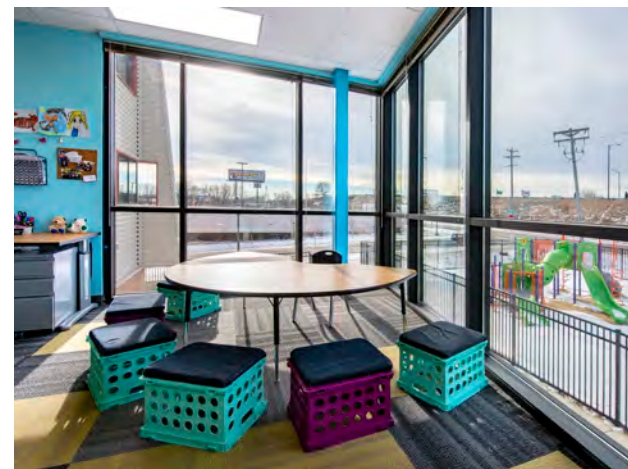






KODET ARCHITECTURAL GROUP, LTD.  
Minneapolis, Minnesota

Creating thoughtful designs to support your community.



# THANK YOU

Visit [www.kodet.com/innovationhub](http://www.kodet.com/innovationhub)

To download this presentation, handouts, and renderings of our projects and to continue to get to know our design team members!



KODET ARCHITECTURAL GROUP

Architecture | Interiors | Planning